

Cash Flow Analysis

Ed	O/M	Bond	Trans	IMRF	WC	HLS	Tort	Construction	Date	Total Funds	Operating Funds
\$2,246,754	\$1,071,083	\$153,692	\$418,585	\$198,197	\$369,948	\$77,908		\$794,088	July '07	\$5,330,255	\$4,106,369
\$2,282,857	\$1,045,091	\$153,692	\$400,870	\$186,885	\$371,557	\$78,980		\$785,208	August '07	\$5,305,141	\$4,100,375
\$2,695,649	\$1,188,176	\$237,568	\$416,271	\$225,542	\$386,527	\$92,229		\$669,768	Sept. '07	\$5,911,730	\$4,686,623
\$2,313,664	\$1,191,467	\$237,568	\$368,265	\$206,266	\$387,697	\$85,044		\$648,279	Oct. '07	\$5,438,250	\$4,261,094
\$2,326,317	\$1,219,898	\$79,202	\$393,179	\$186,100	\$389,137	\$86,337		\$561,947	Nov. '07	\$5,242,116	\$4,328,530
\$2,212,332	\$1,221,470	\$81,151	\$336,902	\$161,648	\$389,231	\$85,011		\$554,796	Dec. '07	\$5,042,543	\$4,159,936
\$1,783,809	\$1,205,560	\$81,979	\$235,015	\$140,559	\$389,271	\$22,478		\$542,422	Jan. '08	\$4,401,093	\$3,613,655
\$1,766,479	\$1,200,124	\$82,112	\$213,950	\$113,679	\$389,277	\$18,167		\$535,266	Feb. '08	\$4,319,053	\$3,569,830
\$1,986,670	\$1,188,158	\$82,112	\$162,499	\$87,870	\$389,277	\$13,455		\$511,050	March '08	\$4,421,092	\$3,726,605
\$1,709,518	\$1,074,365	\$41,428	\$158,773	\$66,409	\$389,278	\$81,848		\$504,395	April '08	\$4,026,012	\$3,331,933
\$1,782,201	\$1,065,991	\$44,141	\$114,793	\$57,904	\$391,524	\$73,991		\$504,395	May '08	\$4,034,938	\$3,354,508
\$2,764,163	\$1,236,333	\$135,990	\$116,732	\$101,386	\$401,532	\$94,101		\$487,526	June '08	\$5,337,763	\$4,518,760
\$3,107,118	\$1,266,209	\$142,671	\$204,934	\$172,161	\$414,566	\$107,136		\$480,870	July '08	\$5,895,664	\$4,992,827
\$3,017,968	\$1,238,717	\$165,002	\$200,468	\$182,753	\$418,813	\$111,382	\$20,013	\$471,023	August '08	\$5,826,140	\$4,875,967
\$3,296,107	\$1,252,984	\$222,899	\$129,094	\$238,060	\$431,718	\$108,193	\$157,533	\$475,335	Sept. '08	\$6,311,922	\$5,109,903
\$2,732,557	\$1,197,506	\$228,714	\$79,100	\$222,770	\$433,165	\$109,539	\$343,306	\$469,306	Oct. '08	\$5,815,964	\$4,442,328
\$2,757,504	\$1,156,586	\$76,275	\$36,406	\$205,934	\$435,141	\$111,515	\$350,971	\$460,150	Nov. '08	\$5,590,481	\$4,385,636
\$3,450,190	\$1,086,207	\$76,661	\$107,349	\$177,267	\$435,160	\$111,050	\$348,758	\$453,495	Dec. '08	\$6,246,137	\$5,078,906
\$3,046,841	\$1,014,716	\$76,665	(\$15,509)	\$148,474	\$435,160	\$98,962	\$342,719	\$443,751	Jan. '09	\$5,591,779	\$4,481,208
\$2,816,317	\$944,828	\$76,665	\$86,319	\$118,673	\$435,160	\$95,942	\$340,956	\$437,095	Feb. '09	\$5,351,955	\$4,282,623
\$2,805,257	\$871,091	\$76,665	\$37,221	\$89,925	\$435,160	\$94,150	\$339,725	\$442,427	Mar. '09	\$5,191,622	\$4,148,729
\$2,456,875	\$810,012	\$39,209	\$216,196	\$65,618	\$435,160	\$93,025	\$339,212	\$435,702	Apr. '09	\$4,891,008	\$3,918,243
\$2,615,181	\$696,391	\$20,213	\$156,683	\$45,081	\$435,726	\$93,591	\$336,687	\$399,825	May '09	\$4,799,378	\$3,903,981
\$2,569,091	\$1,273,506	\$141,320	\$165,838	\$133,798	\$448,627	\$106,491	\$345,980	\$391,968	June '09	\$5,576,618	\$4,457,061
\$2,290,551	\$1,331,356	\$150,059	\$325,023	\$229,760	\$461,662	\$119,526	\$353,108	\$385,312	July '09	\$5,646,357	\$4,408,591
\$2,634,211	\$1,306,878	\$1,535,336	\$435,817	\$219,366	\$462,796	\$344,065	\$350,993	\$376,571	August '09	\$7,666,033	\$4,839,701
\$3,202,278	\$1,441,450	\$228,184	\$377,602	\$329,776	\$479,137	\$359,120	\$311,904	\$369,916	Sept. '09	\$7,099,366	\$5,500,466
\$2,722,545	\$1,448,442	\$232,735	\$330,984	\$311,313	\$480,389	\$359,664	\$283,982	\$381,440	Oct. '09	\$6,551,493	\$4,982,359
\$2,701,216	\$1,460,223	\$70,592	\$286,329	\$294,629	\$482,050	\$361,325	\$266,249	\$374,777	Nov. '09	\$6,297,391	\$4,929,818
\$2,596,498	\$1,461,886	\$70,592	\$150,780	\$265,262	\$482,050	\$136,336	\$249,283	\$365,041	Dec. '09	\$5,777,729	\$4,691,214
\$2,091,153	\$1,456,963	\$70,592	\$269,207	\$238,530	\$482,050	\$133,316	\$227,135	\$355,423	Jan. '10	\$5,324,370	\$4,299,373
\$2,076,999	\$1,438,329	\$70,592	\$210,628	\$206,225	\$482,050	\$131,978	\$210,929	\$348,768	Feb. '10	\$5,176,499	\$4,208,006
\$2,021,777	\$1,384,741	\$70,592	\$160,164	\$174,680	\$482,050	\$131,978	\$192,672	\$323,040	Mar. '10	\$4,941,695	\$4,048,732
\$1,539,281	\$1,337,557	\$36,833	\$104,645	\$148,718	\$482,050	\$131,603	\$121,802	\$316,384	Apr. '10	\$4,218,874	\$3,463,534
\$1,511,125	\$1,349,218	\$29,098	\$58,408	\$134,478	\$483,423	\$132,976	\$114,424	\$310,061	May '10	\$4,123,211	\$3,402,173
\$2,606,215	\$1,377,219	\$85,229	\$106,162	\$255,985	\$496,832	\$120,513	\$194,276	\$302,153	June '10	\$5,544,584	\$4,586,429
\$2,330,929	\$1,427,190	\$123,169	\$398,938	\$374,041	\$509,062	\$132,742	\$247,318	\$295,633	July '10	\$5,839,022	\$4,666,118
\$2,747,564	\$1,393,154	\$146,469	\$414,601	\$382,193	\$512,003	\$116,064	\$240,936	\$286,455	August '10	\$6,239,438	\$5,067,322
\$3,452,418	\$1,374,385	\$255,320	\$369,277	\$529,268	\$527,258	\$129,974	\$329,978	\$293,560	Sept '10	\$7,261,437	\$5,723,338
\$3,172,558	\$1,310,859	\$260,512	\$347,436	\$513,705	\$528,023	\$129,058	\$309,686	\$287,383	Oct '10	\$6,859,221	\$5,358,876
\$3,244,098	\$1,269,037	\$96,821	\$483,886	\$492,643	\$529,782	\$129,329	\$302,041	\$280,728	Nov '10	\$6,828,364	\$5,526,803
\$3,545,376	\$1,191,902	\$69,957	\$377,490	\$468,910	\$529,782	\$120,152	\$280,515	\$274,072	Dec '10	\$6,858,156	\$5,644,551
\$3,729,879	\$1,112,880	\$62,957	\$359,894	\$442,412	\$529,782	\$117,132	\$255,273	\$263,452	Jan '11	\$6,873,660	\$5,732,434
\$3,673,519	\$1,043,099	\$62,957	\$337,606	\$411,886	\$529,782	\$116,532	\$230,625	\$256,796	Feb'11	\$6,662,802	\$5,584,006
\$3,875,026	\$956,105	\$62,957	\$423,120	\$381,967	\$529,782	\$116,532	\$211,239	\$250,141	Mar'11	\$6,806,869	\$5,784,034
\$3,650,291	\$844,477	\$62,957	\$383,489	\$356,832	\$529,782	\$116,532	\$141,755	\$229,096	Apr'11	\$6,315,209	\$5,408,039
\$3,760,040	\$794,822	\$28,273	\$366,888	\$351,074	\$531,925	\$116,211	\$142,201	\$222,444	May'11	\$6,313,877	\$5,453,674
\$4,792,841	\$779,859	\$13,507	\$500,826	\$431,607	\$541,519	\$104,890	\$190,588	\$465,957	June'11	\$7,821,594	\$6,615,045

Ed	O/M	Bond	Trans	IMRF	WC	HLS	Tort	Construction	Date	Total Funds	Operating Funds
\$4,532,416	\$874,373	\$127,279	\$601,062	\$596,012	\$558,303	\$121,002	\$299,155	\$459,302	July'11	\$8,168,905	\$6,566,155
\$4,727,829	\$846,843	\$143,601	\$579,211	\$597,669	\$560,597	\$123,296	\$301,469	\$452,646	August '11	\$8,333,162	\$6,714,480
\$5,711,478	\$960,851	\$254,050	\$464,464	\$739,549	\$576,667	\$137,861	\$403,292	\$461,172	Sept'11	\$9,709,384	\$7,713,461
\$5,353,763	\$895,431	\$261,053	\$412,932	\$721,413	\$577,696	\$138,889	\$391,867	\$465,679	Oct'11	\$9,218,724	\$7,239,822
\$5,340,274	\$880,695	\$142,160	\$363,353	\$704,906	\$579,360	\$137,946	\$383,010	\$459,024	Nov'11	\$8,990,730	\$7,163,683
\$5,252,064	\$846,127	\$108,942	\$311,951	\$672,511	\$579,360	\$128,453	\$364,437	\$452,368	Dec'11	\$8,716,213	\$6,989,502
\$4,788,183	\$813,782	\$59,113	\$292,775	\$643,110	\$579,360	\$125,267	\$347,787	\$438,107	Jan'12	\$8,087,484	\$6,474,101
\$4,706,855	\$771,952	\$59,113	\$226,649	\$607,549	\$579,360	\$125,267	\$322,106	\$431,452	Feb. '12	\$7,830,302	\$6,284,815
\$4,726,908	\$733,485	\$59,113	\$166,550	\$573,441	\$579,360	\$124,934	\$293,088	\$424,796	Mar'12	\$7,681,676	\$6,206,304
\$4,471,751	\$646,254	\$59,113	\$213,006	\$545,428	\$579,360	\$122,664	\$182,443	\$442,647	Apr '12	\$7,262,666	\$5,910,370
\$4,357,039	\$616,368	\$22,664	\$161,869	\$516,804	\$579,601	\$123,731	\$161,989	\$435,992	May '12	\$6,976,057	\$5,714,877
\$4,577,557	\$710,062	\$11,795	\$172,500	\$529,440	\$581,687	\$112,073	\$139,583	\$429,336	June '12	\$7,264,033	\$6,041,806
\$5,070,626	\$870,519	\$125,448	\$332,824	\$572,934	\$585,161	\$126,755	\$124,668	\$422,680	July '12	\$8,231,616	\$6,859,130
\$5,376,738	\$833,622	\$136,136	\$245,034	\$555,169	\$585,475	\$128,143	\$122,750	\$416,025	August '12	\$8,399,092	\$7,040,869
\$6,030,256	\$975,815	\$249,139	\$394,384	\$579,021	\$588,935	\$136,468	\$124,616	\$428,158	Sept '12	\$9,506,790	\$7,989,389
\$5,740,141	\$944,583	\$115,860	\$338,215	\$544,251	\$589,118	\$133,608	\$124,928	\$484,769	Oct. '12	\$9,015,472	\$7,612,057
\$5,520,064	\$920,039	\$85,170	\$282,758	\$507,782	\$589,417	\$133,474	\$125,447	\$478,113	Nov. '12	\$8,642,263	\$7,312,278
\$5,209,822	\$874,813	\$45,863	\$233,793	\$469,305	\$589,417	\$133,374	\$125,447	\$471,040	Dec. '12	\$8,152,874	\$6,907,846
\$4,927,630	\$826,615	\$45,863	\$323,134	\$434,286	\$589,417	\$131,899	\$124,298	\$460,546	Jan'13	\$7,863,687	\$6,666,797
\$4,674,643	\$767,083	\$45,863	\$264,070	\$393,254	\$589,417	\$129,329	\$123,987	\$203,890	Feb '13	\$7,191,537	\$6,295,214
\$4,493,779	\$762,707	\$45,863	\$340,111	\$354,336	\$589,417	\$129,329	\$122,534	\$147,234	Mar '13	\$6,985,312	\$6,186,015
\$4,104,393	\$637,049	\$30,220	\$284,317	\$320,648	\$589,417	\$129,329	\$35,878	\$140,579	April '13	\$6,271,831	\$5,615,177
\$4,307,975	\$625,078	(\$81,497)	\$369,170	\$305,412	\$591,664	\$110,361	\$35,527	\$133,923	May'13	\$6,397,614	\$5,893,888
\$5,205,280	\$842,300	\$111,373	\$453,377	\$504,685	\$614,118	\$71,812	\$34,885	\$127,268	June'13	\$7,965,097	\$7,115,074
\$4,796,370	\$802,247	\$121,932	\$577,151	\$506,467	\$616,168	\$69,335	\$22,025	\$120,612	July '13	\$7,632,307	\$6,791,936
\$4,813,024	\$725,491	\$134,085	\$560,677	\$497,595	\$617,781	\$51,653	\$22,025	\$113,547	Aug. '13	\$7,535,878	\$6,716,973
\$5,413,975	\$846,101	\$241,815	\$586,364	\$609,922	\$633,019	\$63,541	\$25,355	\$105,992	Sept'13	\$8,526,083	\$7,479,458
\$5,157,127	\$804,819	\$112,703	\$541,753	\$584,779	\$633,977	\$64,510	\$25,355	\$122,507	Oct '13	\$8,047,531	\$7,137,676
\$5,041,850	\$794,606	\$78,094	\$495,324	\$560,436	\$635,172	\$65,720	\$18,355	\$116,425	Nov '13	\$7,805,982	\$6,966,952
\$4,923,943	\$731,407	\$46,357	\$538,768	\$520,165	\$635,172	\$59,108	\$18,355	\$109,769	Dec '13	\$7,583,045	\$6,829,290
\$4,652,057	\$678,082	\$46,357	\$508,170	\$495,849	\$635,172	\$54,519	\$17,655	\$96,128	Jan '14	\$7,183,990	\$6,473,480
\$4,400,496	\$625,141	\$46,357	\$459,379	\$459,623	\$635,172	\$53,695	\$17,655	\$89,472	Feb '14	\$6,786,992	\$6,120,188
\$4,375,751	\$572,944	\$46,357	\$497,941	\$422,764	\$635,172	\$52,795	\$17,655	\$83,717	Mar'14	\$6,705,096	\$6,081,807
\$4,277,923	\$562,501	\$25,422	\$552,495	\$397,230	\$635,172	\$52,445	\$17,655	\$77,061	April '14	\$6,597,905	\$6,028,091
\$4,185,183	\$485,196	\$30,034	\$508,812	\$394,335	\$638,140	\$55,448	\$14,255	\$70,406	May'14	\$6,381,809	\$5,817,331
\$5,345,172	\$728,599	\$106,076	\$680,260	\$586,567	\$660,509	\$56,215	\$14,255	\$63,750	June'14	\$8,241,402	\$7,414,539
\$4,832,917	\$686,827	\$110,595	\$671,359	\$591,854	\$662,507	\$61,528	\$6,270	\$56,758	July '14	\$7,680,614	\$6,853,609
\$4,822,048	\$633,050	\$115,885	\$651,700	\$585,869	\$663,849	\$66,464	\$6,270	\$50,089	Aug '14	\$7,595,224	\$6,770,647
\$5,619,464	\$791,919	\$222,684	\$694,843	\$712,520	\$679,767	\$82,570	\$6,270	\$551,421	Sept'14	\$9,361,456	\$7,785,992
\$4,975,090	\$744,978	\$227,391	\$629,172	\$670,671	\$680,516	\$83,623	\$6,270	\$551,268	Oct'14	\$8,568,979	\$7,029,756
\$4,919,836	\$732,022	\$63,041	\$582,290	\$651,285	\$682,084	\$85,208	\$0	\$544,612	Nov'14	\$8,260,379	\$6,916,232
\$4,836,787	\$689,147	\$32,222	\$624,914	\$618,584	\$682,084	\$7,396,967	\$0	\$534,897	Dec'14	\$15,415,602	\$6,832,932
\$4,601,893	\$617,156	\$32,222	\$594,998	\$596,309	\$682,084	\$7,396,897	\$0	\$523,474	JAN'15	\$15,045,032	\$6,496,131
\$4,332,294	\$552,969	\$32,222	\$545,731	\$560,865	\$682,084	\$6,664,535	\$0	\$516,818	Feb'15	\$13,887,518	\$6,113,078
\$4,181,619	\$496,036	\$32,222	\$591,265	\$527,323	\$682,084	\$6,664,465	\$0	\$510,163	Mar'15	\$13,685,177	\$5,951,005
\$4,064,258	\$322,945	\$32,222	\$635,468	\$503,232	\$682,084	\$5,514,983	\$0	\$142,947	April'15	\$11,898,139	\$5,704,755
\$3,658,427	\$377,784	\$41,433	\$573,591	\$476,344	\$684,360	\$5,506,991	\$0	\$102,797	May'15	\$11,421,726	\$5,294,162
\$4,849,239	\$654,705	\$406,690	\$675,469	\$706,325	\$709,472	\$2,852,460	\$0	\$100,316	June '15	\$10,954,676	\$6,888,886
\$4,332,216	\$585,848	\$420,894	\$735,905	\$733,878	\$710,213	\$2,853,211	\$0	\$84,032	July '15	\$10,456,197	\$6,364,182
\$4,319,666	\$545,294	\$435,175	\$727,629	\$686,232	\$710,918	\$1,449,673	\$0	\$62,867	Aug '15	\$8,937,454	\$6,303,507

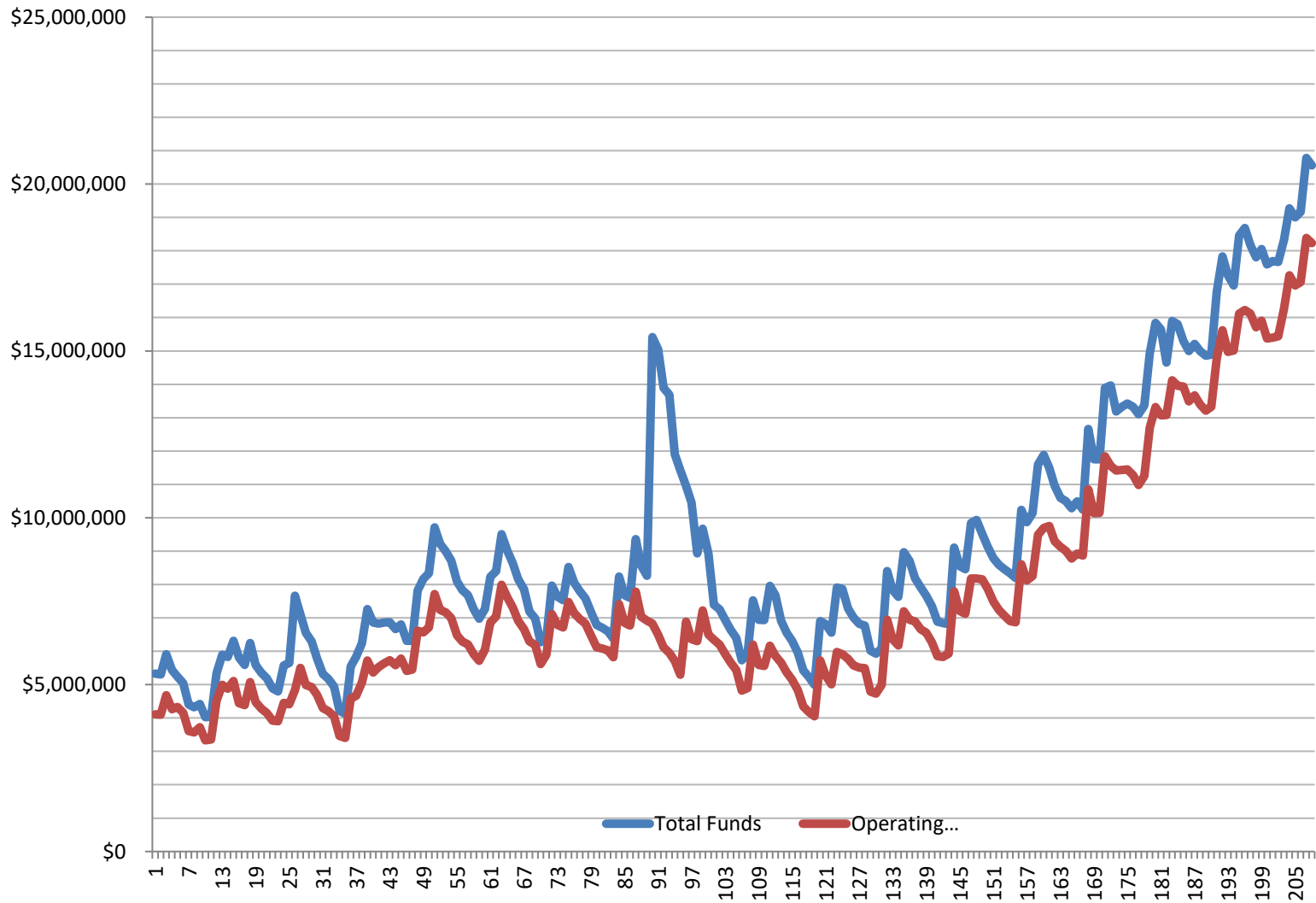
Ed	O/M	Bond	Trans	IMRF	WC	HLS	Tort	Construction	Date	Total Funds	Operating Funds
\$5,037,074	\$688,309	\$723,134	\$772,862	\$818,415	\$727,526	\$833,875	\$0	\$68,750	Sept '15	\$9,669,946	\$7,225,772
\$4,435,546	\$627,219	\$737,365	\$712,663	\$777,530	\$728,273	\$834,633	\$0	\$73,621	Oct '15	\$8,926,849	\$6,503,701
\$4,396,619	\$553,155	\$127,206	\$668,991	\$759,571	\$729,877	\$92,086	\$0	\$70,535	Nov '15	\$7,398,039	\$6,348,641
\$4,276,289	\$502,239	\$172,858	\$688,463	\$726,930	\$729,877	\$85,888	\$0	\$70,680	Dec '15	\$7,253,224	\$6,196,867
\$4,080,788	\$447,054	\$180,022	\$659,208	\$703,999	\$729,877	\$78,724	\$0	\$64,059	Jan '16	\$6,943,733	\$5,916,927
\$3,855,295	\$399,001	\$180,022	\$679,986	\$668,774	\$729,877	\$69,098	\$0	\$64,059	Feb '16	\$6,646,111	\$5,664,158
\$3,724,680	\$350,698	\$180,022	\$632,780	\$648,248	\$729,877	\$68,888	\$0	\$62,421	Mar'16	\$6,397,614	\$5,438,034
\$3,222,398	\$216,924	\$180,022	\$649,265	\$600,955	\$729,877	\$68,888	\$0	\$62,421	April '16	\$5,730,751	\$4,818,464
\$3,308,453	\$226,013	\$249,707	\$626,841	\$624,333	\$735,237	\$70,663	\$0	\$62,421	May '16	\$5,903,669	\$4,896,545
\$4,244,334	\$470,946	\$384,616	\$723,716	\$813,777	\$756,983	\$71,112	\$0	\$62,421	June '16	\$7,527,906	\$6,195,979
\$3,740,798	\$395,882	\$411,119	\$700,720	\$805,488	\$757,576	\$71,713	\$0	\$62,421	July '16	\$6,945,717	\$5,594,976
\$3,768,141	\$330,270	\$439,252	\$700,122	\$803,831	\$759,222	\$73,232	\$0	\$62,421	Aug '16	\$6,936,490	\$5,557,754
\$4,206,785	\$445,986	\$728,620	\$736,394	\$916,137	\$775,523	\$89,767	\$0	\$62,421	Sept '16	\$7,961,634	\$6,164,689
\$4,005,259	\$388,282	\$745,392	\$694,568	\$896,439	\$776,556	\$90,814	\$0	\$83,233	Oct '16	\$7,680,544	\$5,864,665
\$3,929,740	\$288,755	\$208,623	\$657,541	\$878,113	\$778,132	\$92,413	\$0	\$80,046	Nov '16	\$6,913,364	\$5,654,168
\$3,748,618	\$221,511	\$180,039	\$619,167	\$846,156	\$778,132	\$86,466	\$0	\$80,216	Dec '16	\$6,560,306	\$5,367,429
\$3,566,796	\$154,082	\$180,039	\$652,135	\$822,571	\$778,132	\$86,466	\$0	\$75,151	Jan '17	\$6,315,371	\$5,151,144
\$3,282,355	\$166,625	\$180,039	\$608,954	\$787,704	\$778,132	\$85,716	\$0	\$72,615	Feb '17	\$5,962,140	\$4,836,066
\$2,714,651	\$282,212	\$180,039	\$572,832	\$743,008	\$778,132	\$85,716	\$0	\$72,615	Mar '17	\$5,429,205	\$4,347,827
\$2,576,726	\$234,919	\$174,604	\$581,037	\$717,722	\$778,132	\$85,481	\$0	\$72,615	April '17	\$5,221,236	\$4,170,815
\$2,511,692	\$201,488	\$64,931	\$555,883	\$717,695	\$781,308	\$88,633	\$0	\$72,615	May '17	\$4,994,243	\$4,050,370
\$3,805,189	\$400,433	\$64,931	\$710,838	\$946,837	\$806,144	\$91,968	\$0	\$72,615	June '17	\$6,898,954	\$5,722,604
\$3,412,433	\$360,348	\$425,647	\$695,195	\$944,905	\$807,147	\$92,985	\$0	\$72,615	July '17	\$6,811,275	\$5,275,123
\$3,142,815	\$309,414	\$443,526	\$745,829	\$938,813	\$808,286	\$93,991	\$0	\$72,615	Aug '17	\$6,555,289	\$5,006,344
\$3,903,686	\$485,963	\$701,255	\$761,472	\$1,049,516	\$824,208	\$110,142	\$0	\$72,615	Sept '17	\$7,908,857	\$5,975,330
\$3,827,214	\$473,887	\$723,933	\$780,721	\$1,033,181	\$825,618	\$111,572	\$0	\$93,065	Oct '17	\$7,869,191	\$5,907,440
\$3,796,501	\$406,447	\$284,750	\$745,720	\$1,015,888	\$827,349	\$113,328	\$0	\$90,015	Nov '17	\$7,279,999	\$5,776,017
\$3,657,555	\$380,135	\$256,166	\$708,463	\$983,958	\$827,349	\$107,381	\$0	\$90,015	Dec '17	\$7,011,023	\$5,573,503
\$3,669,045	\$344,338	\$154,204	\$672,215	\$961,064	\$827,349	\$107,381	\$0	\$86,262	Jan '18	\$6,821,859	\$5,512,947
\$3,666,044	\$309,406	\$155,582	\$688,386	\$927,671	\$827,322	\$107,322	\$0	\$86,262	Feb '18	\$6,767,994	\$5,491,157
\$3,093,352	\$247,281	\$155,582	\$620,941	\$878,068	\$827,349	\$107,322	\$0	\$86,262	March '18	\$6,016,157	\$4,788,924
\$2,927,994	\$331,418	\$150,147	\$643,586	\$853,665	\$827,349	\$107,322	\$0	\$86,262	April '18	\$5,927,744	\$4,730,348
\$3,221,126	\$320,168	\$58,191	\$620,899	\$830,765	\$832,107	\$111,041	\$0	\$86,262	May '18	\$6,080,559	\$4,994,299
\$4,682,863	\$642,106	\$378,748	\$766,690	\$875,589	\$853,709	\$113,876	\$0	\$86,262	June '18	\$8,399,843	\$6,945,368
\$4,147,342	\$595,081	\$418,165	\$765,811	\$867,372	\$855,889	\$111,805	\$0	\$77,206	July '18	\$7,838,672	\$6,364,123
\$4,024,826	\$546,688	\$432,106	\$747,694	\$833,841	\$856,631	\$112,463	\$0	\$77,206	Aug '18	\$7,631,455	\$6,175,839
\$4,854,393	\$774,040	\$710,263	\$698,006	\$842,640	\$872,034	\$129,235	\$0	\$89,429	Sept '18	\$8,970,040	\$7,198,473
\$4,650,485	\$763,073	\$720,455	\$653,768	\$812,903	\$872,669	\$129,925	\$0	\$98,769	Oct '18	\$8,702,047	\$6,939,994
\$4,736,237	\$727,634	\$274,345	\$557,392	\$782,461	\$874,257	\$131,654	\$0	\$102,133	Nov. '18	\$8,186,112	\$6,895,519
\$4,603,308	\$665,264	\$274,345	\$511,908	\$749,624	\$874,257	\$131,654	\$0	\$102,133	Dec '18	\$7,912,494	\$6,654,737
\$4,510,435	\$639,218	\$144,074	\$538,493	\$728,041	\$874,257	\$126,307	\$0	\$102,133	Jan '19	\$7,662,958	\$6,562,403
\$4,270,183	\$618,247	\$144,074	\$498,612	\$698,511	\$874,257	\$126,157	\$0	\$114,631	Feb '19	\$7,344,671	\$6,261,299
\$3,952,586	\$581,343	\$144,074	\$442,232	\$651,190	\$874,257	\$125,518	\$0	\$114,631	March '19	\$6,885,830	\$5,850,418
\$3,916,179	\$563,268	\$144,074	\$479,143	\$628,858	\$874,257	\$125,368	\$0	\$114,631	April '19	\$6,845,776	\$5,832,847
\$4,002,281	\$545,029	\$29,152	\$505,527	\$609,264	\$876,166	\$127,295	\$0	\$114,631	May '19	\$6,809,345	\$5,929,003
\$5,426,076	\$872,130	\$367,532	\$597,425	\$693,402	\$900,577	\$131,388	\$0	\$114,631	June '19	\$9,103,161	\$7,796,208
\$4,889,058	\$816,585	\$403,151	\$597,807	\$689,258	\$902,583	\$133,569	\$0	\$114,631	July '19	\$8,546,642	\$7,206,032
\$4,800,954	\$793,236	\$417,697	\$625,358	\$665,852	\$903,501	\$134,418	\$0	\$114,631	Aug '19	\$8,455,647	\$7,123,049
\$5,581,435	\$1,017,105	\$696,960	\$664,225	\$699,930	\$919,519	\$151,839	\$0	\$110,446	Sept '19	\$9,841,460	\$8,182,284
\$5,641,060	\$1,011,347	\$716,245	\$611,099	\$679,157	\$920,703	\$153,127	\$0	\$201,659	Oct '19	\$9,934,395	\$8,184,208

Ed	O/M	Bond	Trans	IMRF	WC	HLS	Tort	Construction	Date	Total Funds	Operating Funds
\$5,680,921	\$977,553	\$260,978	\$573,175	\$653,836	\$922,495	\$155,077	\$0	\$287,756	Nov '19	\$9,511,791	\$8,154,144
\$5,562,410	\$956,228	\$129,650	\$429,888	\$622,345	\$922,495	\$142,827	\$0	\$368,374	Dec '19	\$9,134,218	\$7,871,022
\$5,265,001	\$915,040	\$129,650	\$381,668	\$583,502	\$922,495	\$142,532	\$0	\$446,723	Jan '20	\$8,786,612	\$7,484,205
\$5,091,238	\$893,036	\$129,650	\$334,586	\$549,567	\$922,495	\$142,382	\$0	\$524,268	Feb '20	\$8,587,223	\$7,241,355
\$4,978,105	\$864,689	\$129,650	\$305,228	\$514,708	\$922,495	\$142,192	\$0	\$604,221	March '20	\$8,461,288	\$7,070,517
\$4,848,502	\$857,260	\$129,650	\$271,136	\$489,899	\$922,495	\$142,192	\$0	\$672,843	April '20	\$8,333,978	\$6,899,394
\$4,791,842	\$851,585	(\$6,203)	\$305,440	\$455,835	\$922,495	\$142,042	\$0	\$731,232	May '20	\$8,194,267	\$6,871,362
\$6,070,047	\$1,143,172	\$266,336	\$449,816	\$609,501	\$944,256	\$142,926	\$0	\$607,110	June '20	\$10,233,165	\$8,607,292
\$5,582,300	\$1,128,233	\$357,127	\$464,549	\$626,915	\$949,067	\$148,010	\$0	\$609,102	July '20	\$9,865,302	\$8,124,148
\$5,836,155	\$1,064,190	\$390,873	\$399,474	\$623,944	\$950,998	\$150,110	\$0	\$723,359	Aug '20	\$10,139,103	\$8,250,817
\$6,742,089	\$1,314,316	\$698,032	\$466,676	\$735,397	\$968,445	\$169,088	\$0	\$504,064	Sept '20	\$11,598,107	\$9,491,527
\$6,862,575	\$1,331,474	\$713,397	\$532,720	\$713,378	\$969,388	\$169,964	\$0	\$588,992	Oct '20	\$11,881,889	\$9,696,158
\$6,986,253	\$1,286,801	\$232,006	\$511,228	\$691,392	\$970,570	\$171,250	\$0	\$647,530	Nov '20	\$11,497,031	\$9,754,852
\$6,602,781	\$1,253,035	\$120,403	\$469,905	\$645,151	\$970,570	\$166,596	\$0	\$725,514	Dec '20	\$10,953,956	\$9,296,291
\$6,391,878	\$1,226,896	\$120,403	\$542,556	\$375,347	\$970,570	\$166,446	\$0	\$801,409	Jan '21	\$10,595,506	\$9,131,900
\$6,334,556	\$1,192,937	\$120,403	\$507,917	\$344,128	\$970,570	\$166,446	\$0	\$858,887	Feb '21	\$10,495,845	\$9,005,980
\$6,170,089	\$1,153,548	\$120,403	\$482,222	\$309,442	\$970,570	\$166,446	\$0	\$916,649	March '21	\$10,289,369	\$8,776,429
\$6,300,854	\$1,114,185	\$120,403	\$541,133	\$284,976	\$970,570	\$166,446	\$0	\$991,059	April '21	\$10,489,627	\$8,926,742
\$6,351,724	\$1,079,062	\$52,790	\$466,842	\$261,066	\$970,570	\$166,446	\$0	\$893,081	May '21	\$10,241,582	\$8,868,199
\$7,883,804	\$1,414,783	\$304,856	\$552,260	\$465,557	\$996,260	\$171,327	\$0	\$869,404	June '21	\$12,658,252	\$10,847,107
\$7,135,635	\$1,368,734	\$351,147	\$633,235	\$469,453	\$998,918	\$174,227	\$0	\$624,555	July '21	\$11,755,904	\$10,136,522
\$7,186,064	\$1,351,520	\$376,383	\$609,456	\$460,464	\$1,000,633	\$175,948	\$0	\$591,735	Aug '21	\$11,752,203	\$10,147,673
\$8,532,179	\$1,659,011	\$599,922	\$639,271	\$560,721	\$1,015,582	\$191,510	\$0	\$689,856	Sept '21	\$13,888,053	\$11,846,043
\$8,393,750	\$1,463,432	\$625,153	\$678,749	\$796,774	\$1,017,197	\$193,272	\$0	\$791,480	Oct '21	\$13,959,807	\$11,553,129
\$8,317,428	\$1,506,333	(\$61,396)	\$578,096	\$769,488	\$1,018,166	\$194,329	\$0	\$860,623	Nov '21	\$13,183,067	\$11,420,023
\$8,168,741	\$1,674,931	\$40,007	\$567,292	\$720,743	\$1,018,166	\$189,914	\$0	\$945,069	Dec '21	\$13,324,864	\$11,429,130
\$8,134,258	\$1,682,126	\$40,007	\$616,549	\$704,691	\$1,018,166	\$189,564	\$0	\$1,036,069	Jan '22	\$13,421,431	\$11,451,099
\$8,081,812	\$1,622,392	\$40,007	\$558,385	\$668,546	\$1,018,166	\$189,564	\$0	\$1,144,090	Feb '22	\$13,322,962	\$11,280,755
\$7,960,070	\$1,479,840	\$40,007	\$525,437	\$636,182	\$1,018,166	\$189,564	\$0	\$1,253,051	March '22	\$13,102,316	\$10,983,512
\$8,094,569	\$1,574,934	\$40,007	\$561,548	\$614,302	\$1,018,166	\$189,564	\$0	\$1,270,257	April '22	\$13,363,347	\$11,249,217
\$9,321,254	\$1,760,414	\$148,734	\$587,050	\$717,686	\$1,031,345	\$203,915	\$0	\$1,157,498	May '22	\$14,927,895	\$12,700,063
\$10,065,411	\$1,908,667	\$222,284	\$298,194	\$824,182	\$1,046,396	\$220,303	\$0	\$1,255,967	June '22	\$15,841,403	\$13,318,667
\$9,573,662	\$1,787,172	\$250,828	\$664,792	\$826,546	\$1,048,560	\$198,971	\$0	\$1,295,537	July '22	\$15,646,068	\$13,074,186
\$9,691,551	\$1,683,061	\$275,303	\$653,188	\$818,816	\$1,050,434	\$201,009	\$0	\$277,879	Aug '22	\$14,651,241	\$13,078,234
\$10,584,650	\$1,791,780	\$461,834	\$680,207	\$909,794	\$1,064,580	\$216,412	\$0	\$191,661	Sept '22	\$15,900,917	\$14,121,216
\$10,453,694	\$1,783,076	\$475,554	\$653,103	\$897,374	\$1,065,620	\$217,395	\$0	\$255,898	Oct '22	\$15,801,714	\$13,955,493
\$10,533,216	\$1,719,682	(\$70,213)	\$614,506	\$876,736	\$1,067,360	\$219,289	\$0	\$339,364	Nov '22	\$15,299,940	\$13,934,763
\$10,207,561	\$1,657,848	\$32,122	\$558,923	\$828,272	\$1,067,343	\$215,343	\$0	\$427,019	Dec '22	\$14,994,432	\$13,491,675
\$10,341,134	\$1,703,735	\$32,133	\$557,343	\$811,934	\$1,067,360	\$215,218	\$0	\$476,253	Jan '23	\$15,205,109	\$13,669,571
\$10,165,172	\$1,655,308	\$32,133	\$507,078	\$774,774	\$1,067,360	\$215,078	\$0	\$577,236	Feb '23	\$14,994,138	\$13,394,918
\$10,123,678	\$1,561,658	\$32,133	\$456,981	\$746,981	\$1,067,360	\$215,078	\$0	\$650,633	March '23	\$14,854,500	\$13,209,676
\$10,236,965	\$1,573,750	(\$25,244)	\$446,652	\$726,134	\$1,067,360	\$214,928	\$0	\$652,828	April '23	\$14,893,372	\$13,324,726
\$11,361,838	\$1,837,428	\$182,492	\$481,089	\$856,826	\$1,083,936	\$232,982	\$0	\$728,456	May '23	\$16,765,047	\$14,764,291
\$11,940,558	\$2,069,708	\$222,214	\$511,075	\$939,307	\$1,097,157	\$223,427	\$0	\$823,007	June '23	\$17,826,454	\$15,618,499
\$11,458,178	\$1,893,248	\$252,031	\$516,638	\$953,121	\$1,099,536	\$226,018	\$0	\$868,248	July '23	\$17,267,018	\$14,967,600
\$11,538,215	\$1,865,785	\$272,565	\$508,538	\$944,412	\$1,101,175	\$227,803	\$0	\$503,588	Aug '23	\$16,962,081	\$15,013,713
\$12,397,064	\$2,069,476	\$456,691	\$535,540	\$1,040,541	\$1,115,867	\$243,805	\$0	\$601,982	Sept '23	\$18,460,965	\$16,117,947
\$12,442,744	\$2,089,506	\$473,633	\$577,137	\$1,024,573	\$1,117,219	\$245,277	\$0	\$708,871	Oct '23	\$18,678,958	\$16,226,605
\$12,400,860	\$2,070,344	\$33,093	\$528,802	\$1,002,030	\$1,119,001	\$247,019	\$0	\$776,813	Nov '23	\$18,177,963	\$16,119,008
\$12,078,117	\$2,041,074	\$28,077	\$472,868	\$950,569	\$1,119,001	\$243,610	\$0	\$872,630	Dec '23	\$17,805,946	\$15,711,060

Ed	O/M	Bond	Trans	IMRF	WC	HLS	Tort	Construction	Date	Total Funds	Operating Funds
\$12,186,047	\$2,080,841	\$28,077	\$519,000	\$927,807	\$1,119,001	\$243,610	\$0	\$945,331	Jan '24	\$18,049,714	\$15,904,889
\$11,718,162	\$2,070,302	\$28,076	\$469,225	\$889,072	\$1,119,001	\$243,610	\$0	\$1,054,589	Feb '24	\$17,592,037	\$15,376,691
\$11,773,976	\$2,091,991	\$28,077	\$411,070	\$854,247	\$1,119,001	\$243,610	\$0	\$1,165,698	March '24	\$17,687,670	\$15,396,038
\$11,771,839	\$2,092,872	(\$27,073)	\$454,203	\$824,521	\$1,119,001	\$243,460	\$0	\$1,186,612	April '24	\$17,665,435	\$15,437,915
\$12,333,386	\$2,327,910	\$147,518	\$461,489	\$905,501	\$1,133,596	\$259,351	\$0	\$753,459	May '24	\$18,322,210	\$16,256,382
\$13,462,185	\$2,029,653	\$232,950	\$625,705	\$1,042,419	\$1,151,355	\$254,292	\$0	\$476,180	June '24	\$19,274,738	\$17,268,898
\$13,301,235	\$1,903,960	\$253,181	\$601,309	\$1,042,767	\$1,153,046	\$256,133	\$0	\$491,415	July '24	\$19,003,047	\$16,959,551
\$13,471,677	\$1,852,206	\$263,389	\$579,007	\$1,022,508	\$1,153,900	\$257,062	\$0	\$568,115	Aug '24	\$19,167,864	\$17,056,790
\$14,442,571	\$2,170,055	\$468,470	\$600,564	\$1,137,483	\$1,171,043	\$275,728	\$0	\$516,403	Sept '24	\$20,782,317	\$18,384,233
\$14,228,023	\$2,211,596	\$481,300	\$620,987	\$1,109,175	\$1,172,115	\$276,896	\$0	\$460,386	Oct '24	\$20,560,478	\$18,232,721

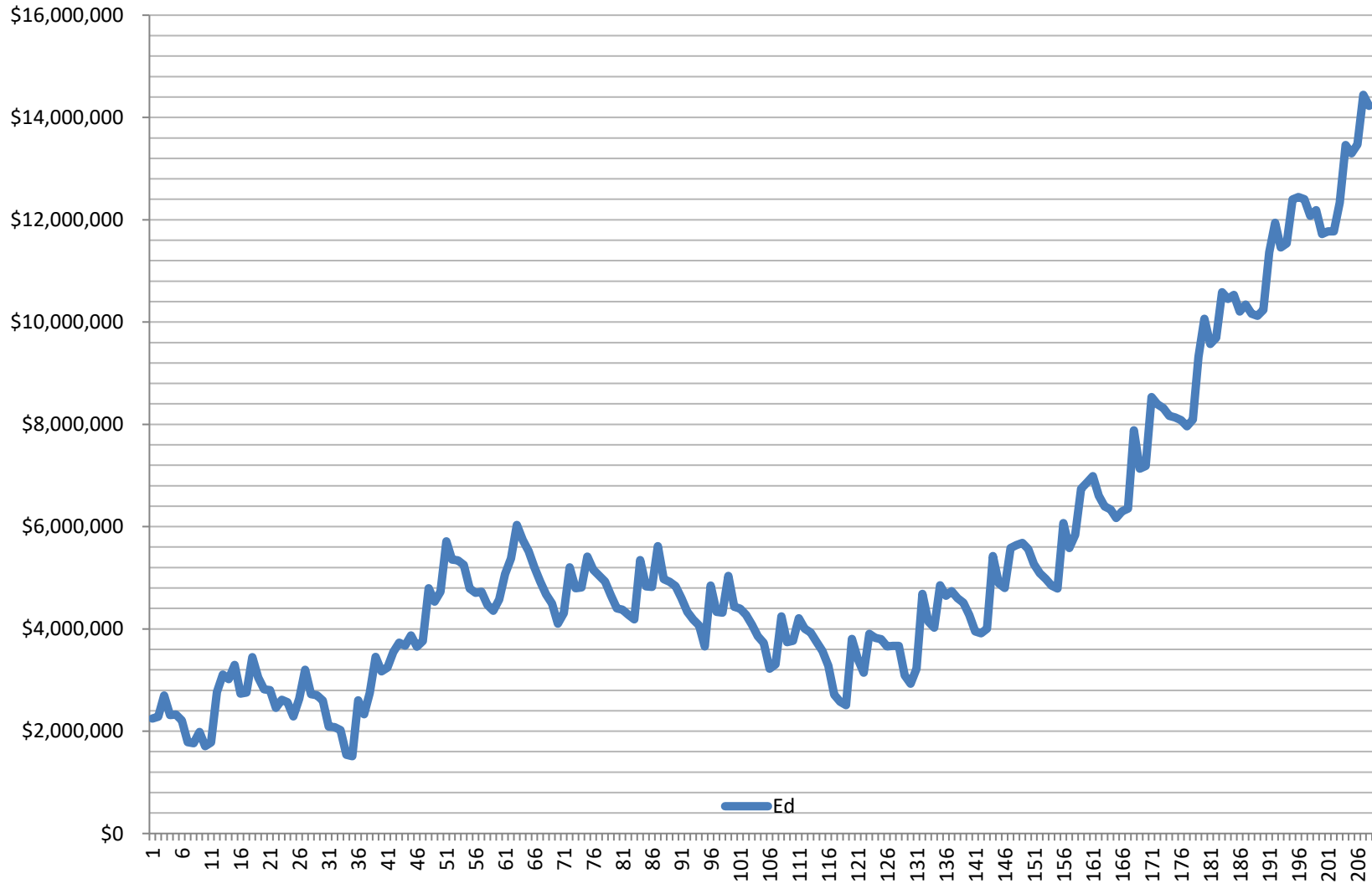
Monthly Balance (All Funds)

August 2007-Oct 2024

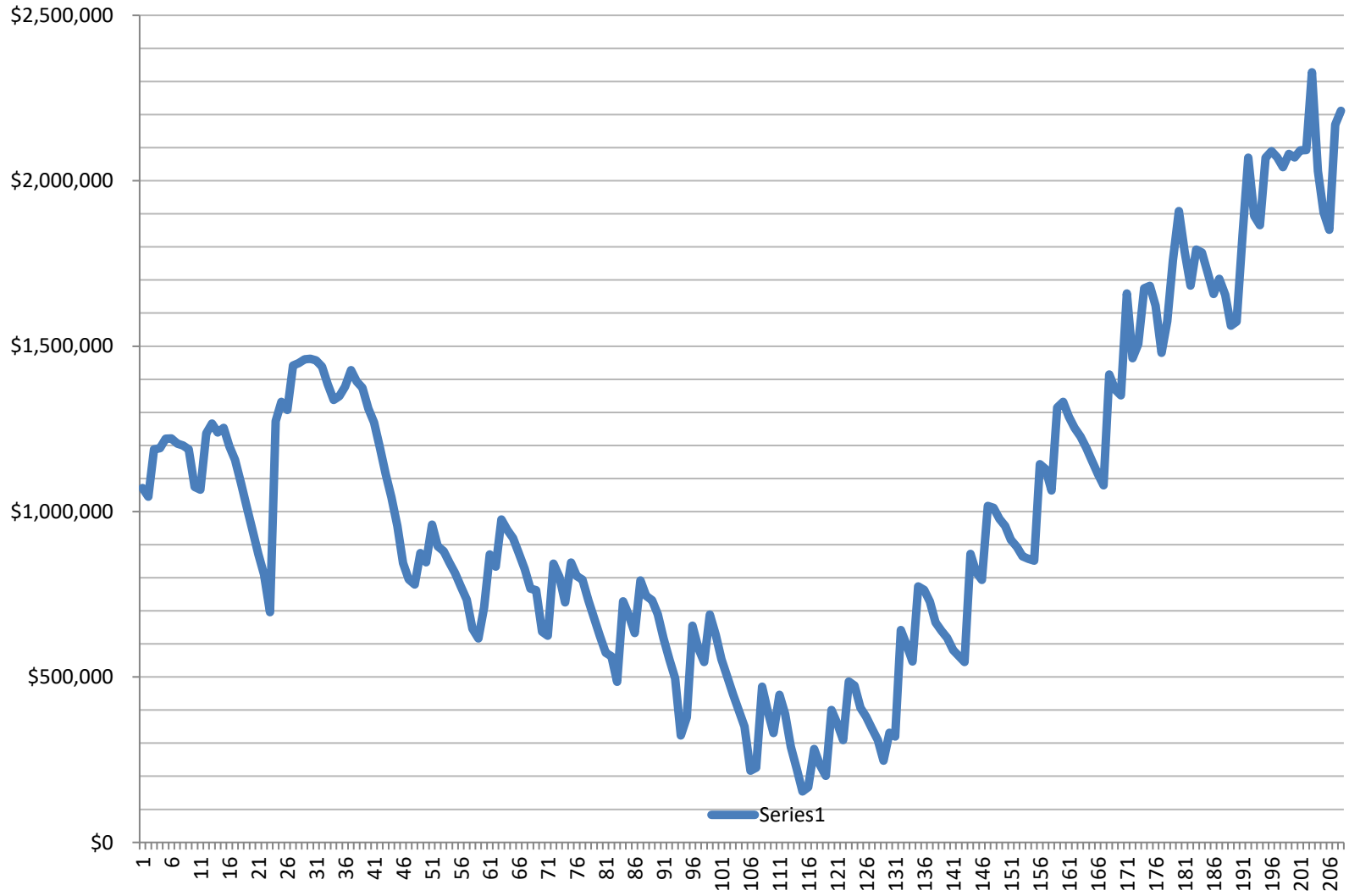


Monthly Balance (Education)

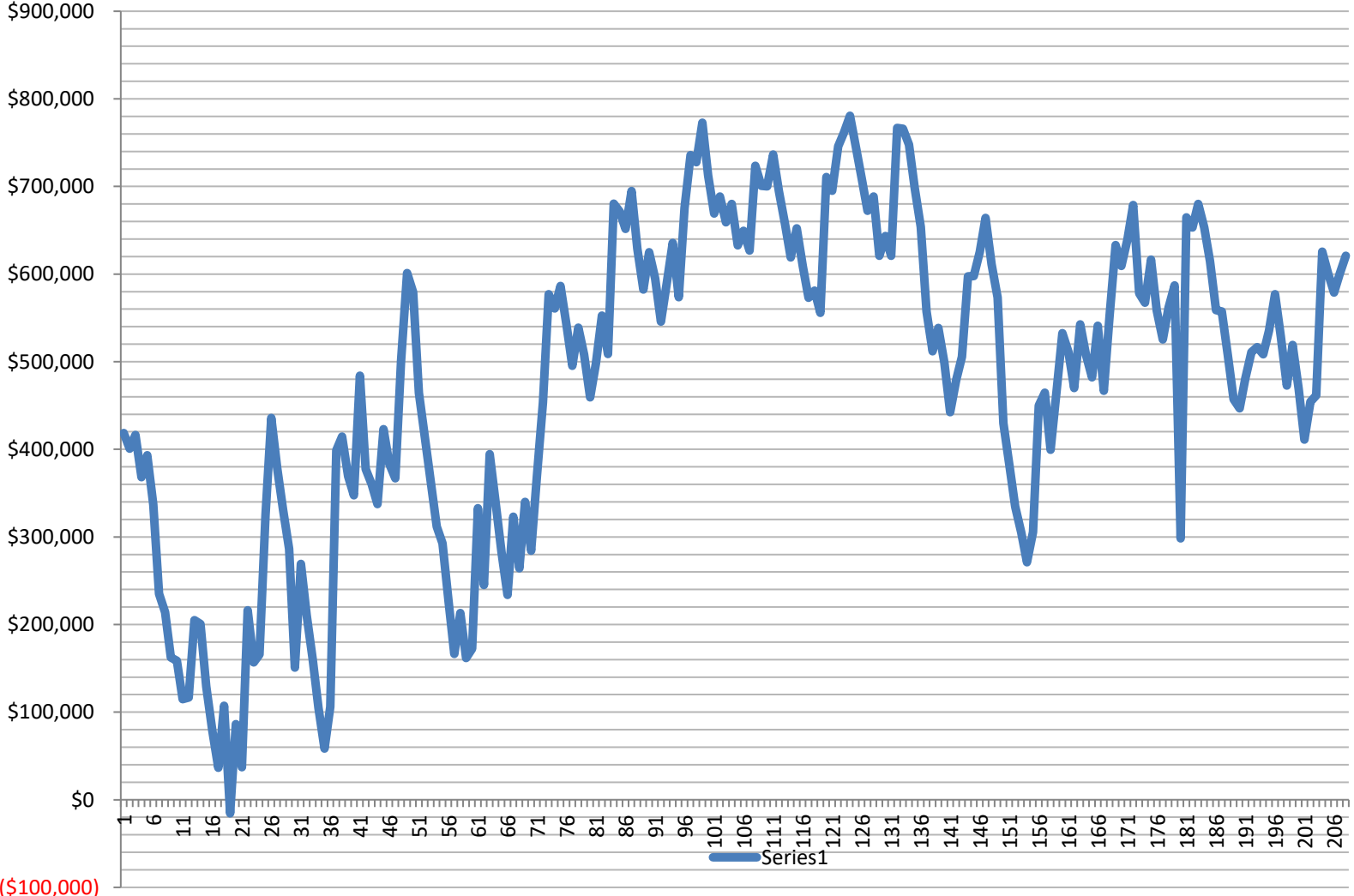
August 2007-Oct 2024



Monthly Balance (Operations) August 2007-Oct 2024



Monthly Balance (Transportation) August 2007-Oct 2024



Monthly Balance (Working Cash) August 2007-Oct 2024

